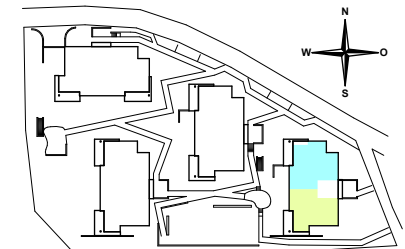
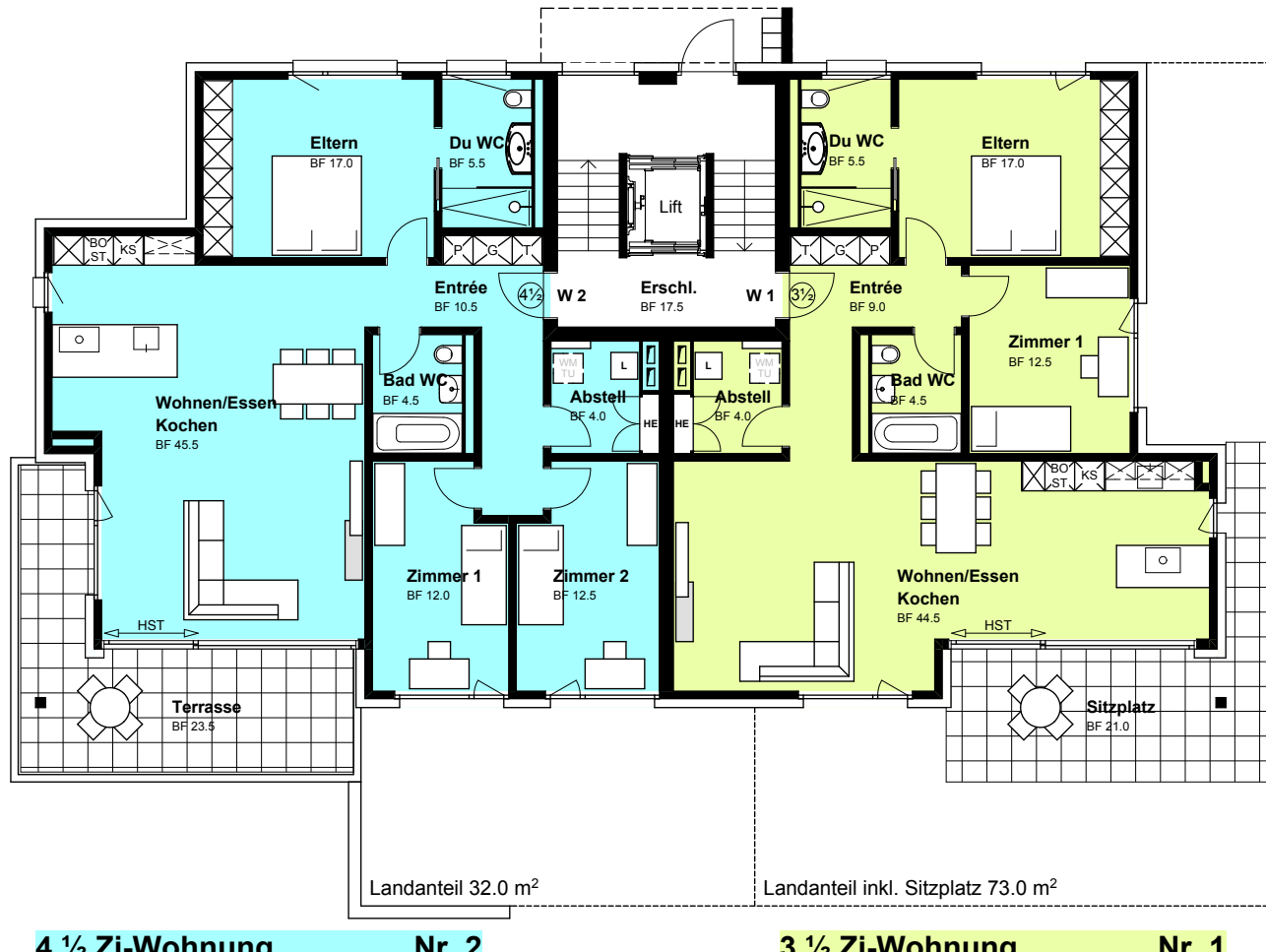
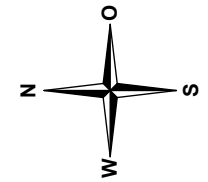
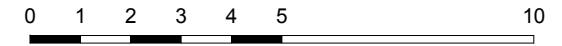


# Wohnpark Taaholz in Uzwil (SG)

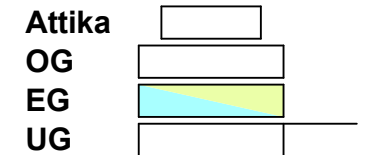
## Erdgeschoss

## Haus 1

Gez. 29.02.2016 rp  
Rev. 20.11.2017 pb



Situation



### LEGENDE

- BF = Bodenfläche
- BGF = Bruttogeschossfläche
- G = Garderobenschrank
- T = Tablarschrank
- P = Putzschrank
- BO = Backofen/Steamer
- KS = Kühlschrank/Tiefkühler
- HST = Hebeschiebetüre
- L = Lüftungsgerät KWL
- W/T = Anschluss WM/TU
- H = Heizverteilung
- E = Elektroverteilung

4 ½ Zi-Wohnung	Nr. 2
BGF Wohnen	132.5 m²
BF Terrasse	23.5 m²
BF Landanteil	32.0 m²
BF Disponibel im Untergeschoss	23.5 m²

3 ½ Zi-Wohnung	Nr. 1
BGF Wohnen	116.0 m²
BF Sitzplatz	21.0 m²
BF Landanteil (inkl. Sitzplatz)	73.0 m²
BF Disponibel im Untergeschoss	19.0 m²